

CIRCOURT

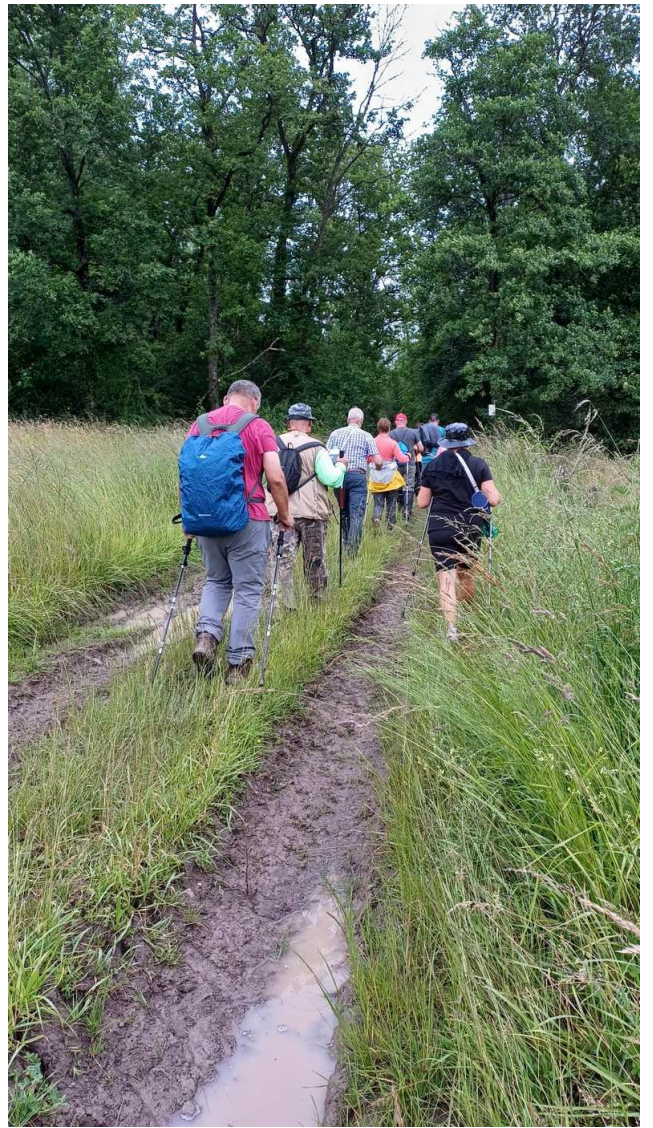
Lundi 17 juin 2024
17 participants-11 kms

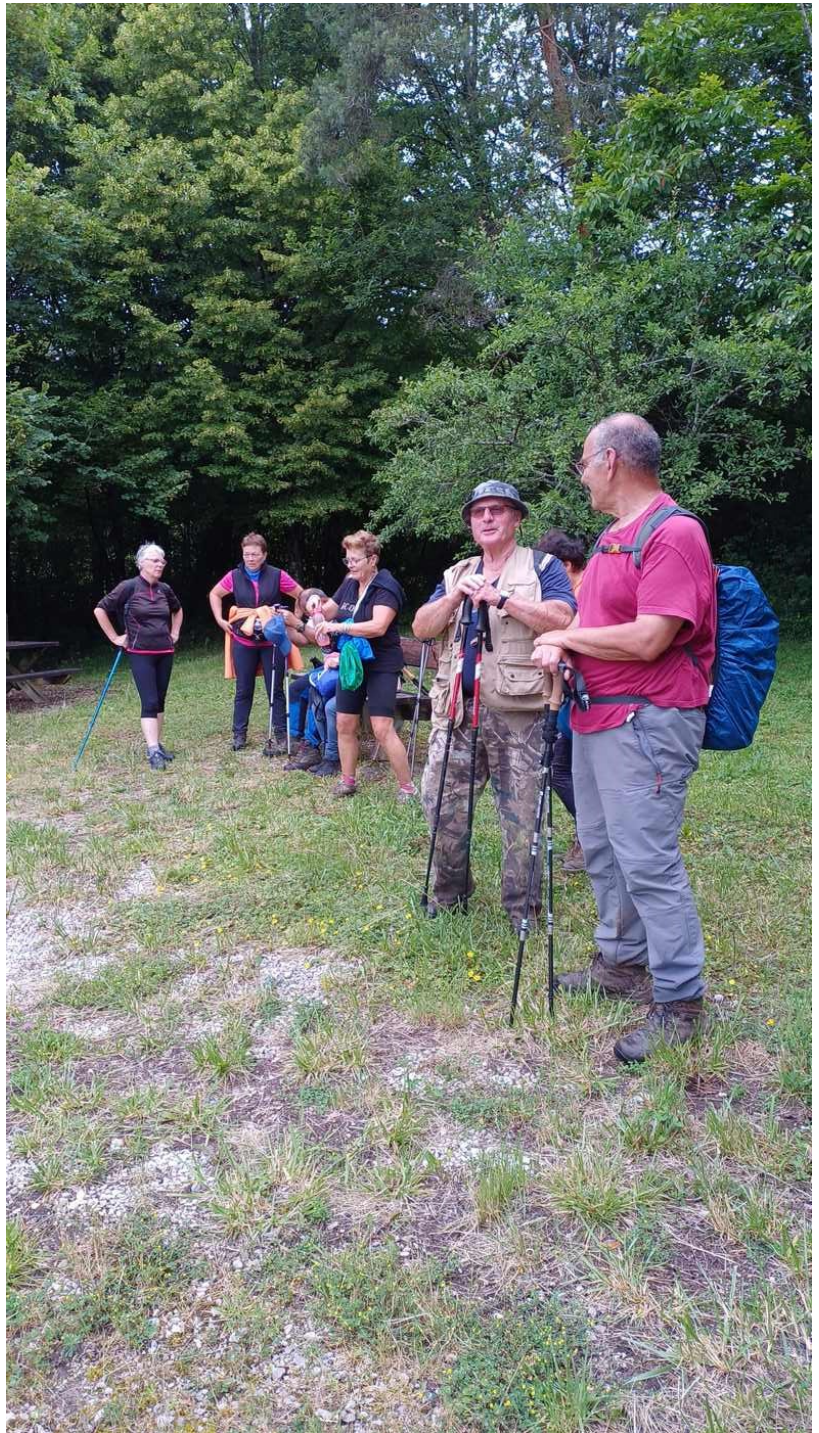


Église paroissiale
Saint-Symphorien

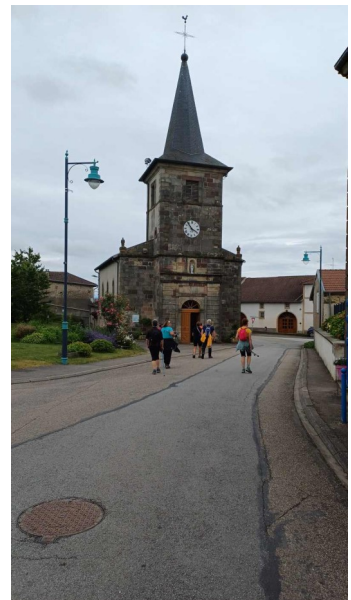








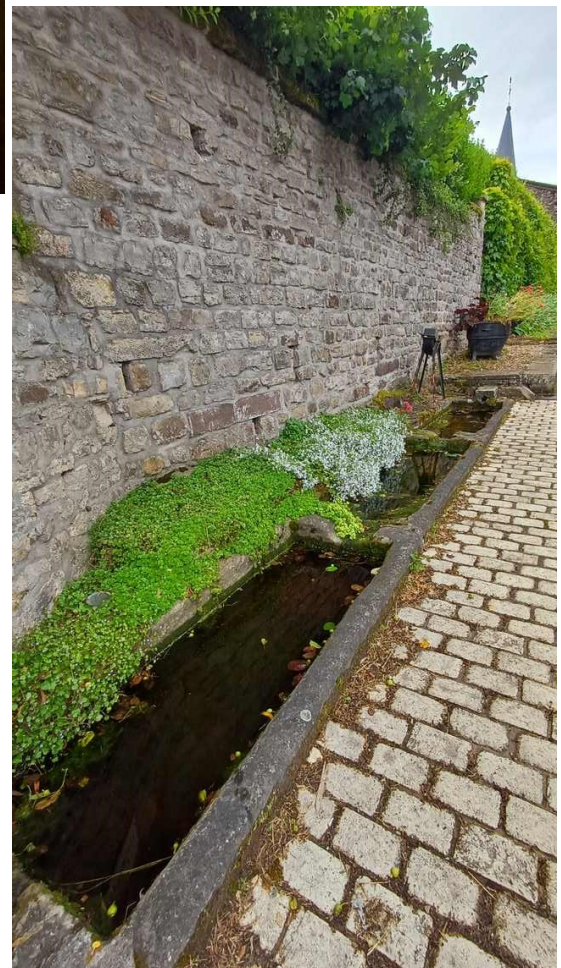
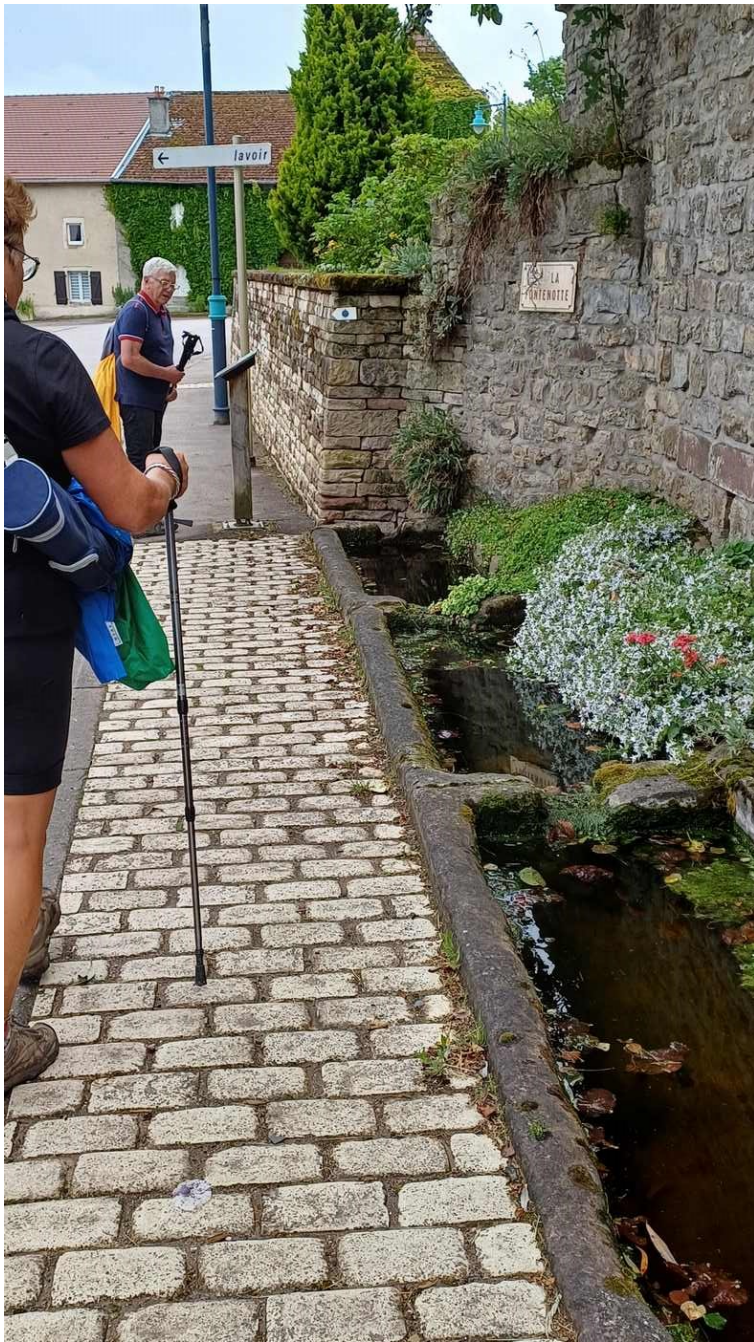




Eglise St Mathieu
Bouxières aux Bois

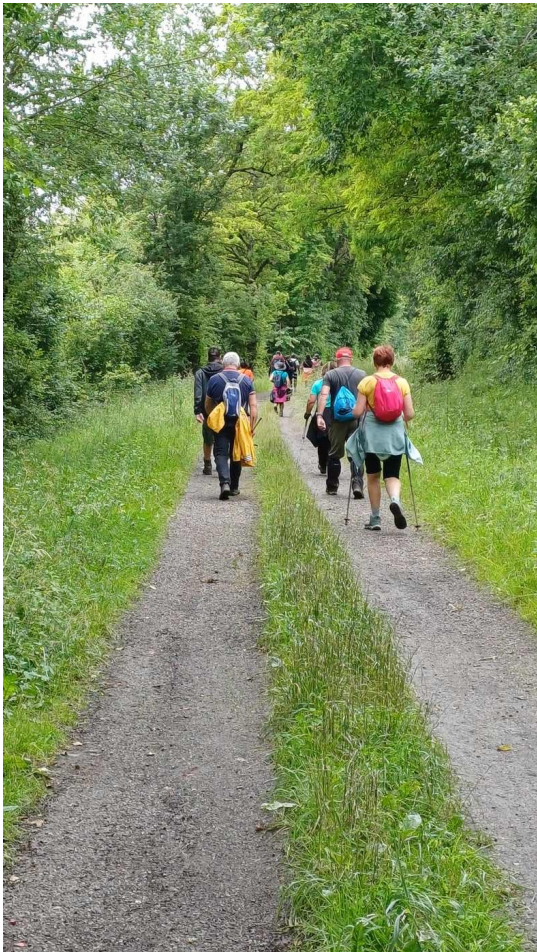


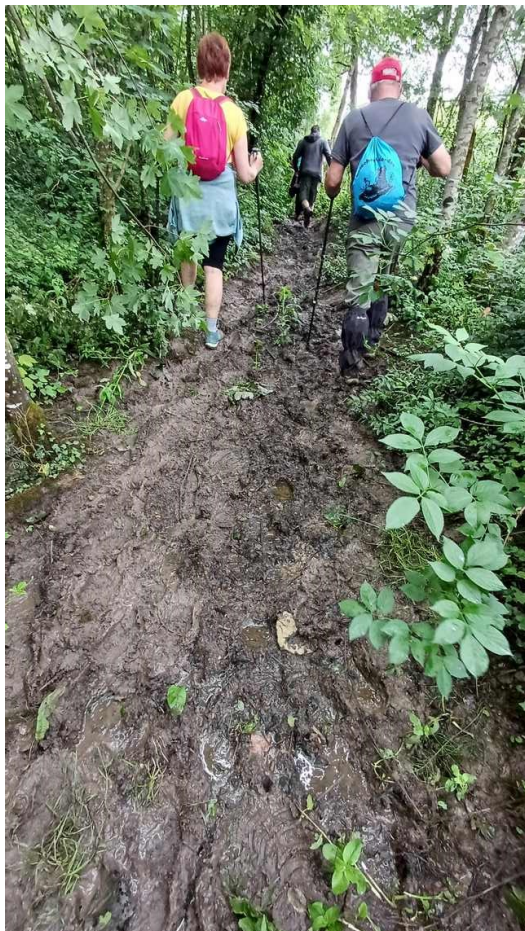
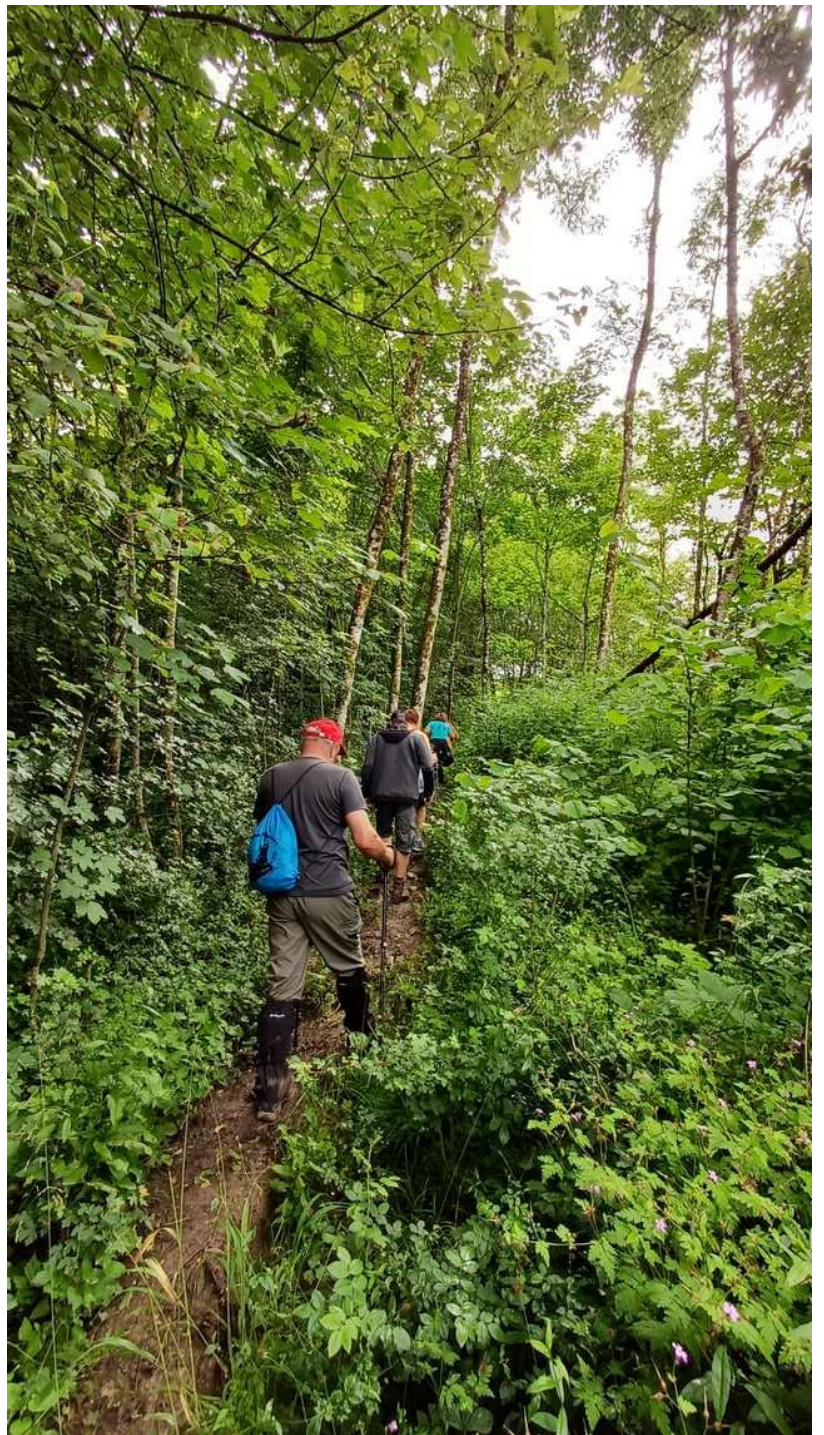
CETTE ÉGLISE A ÉTÉ
RESTAURÉE EN 1853, SOUS
L'ADMINISTRATION DE
M. M. GERARD GEORGE EUGÈNE
MAIRE, CLAUDEL^F ADJOINT M. M. LES
MEMBRES DU CONSEIL MUNICIPAL RÉUNIS,
M. M. SARTORI ET GRIJOLOT ARCHITECTES,
BRULTEY PÈRE ET FILS
ENTREPRENEURS À
BETTEGNEY.











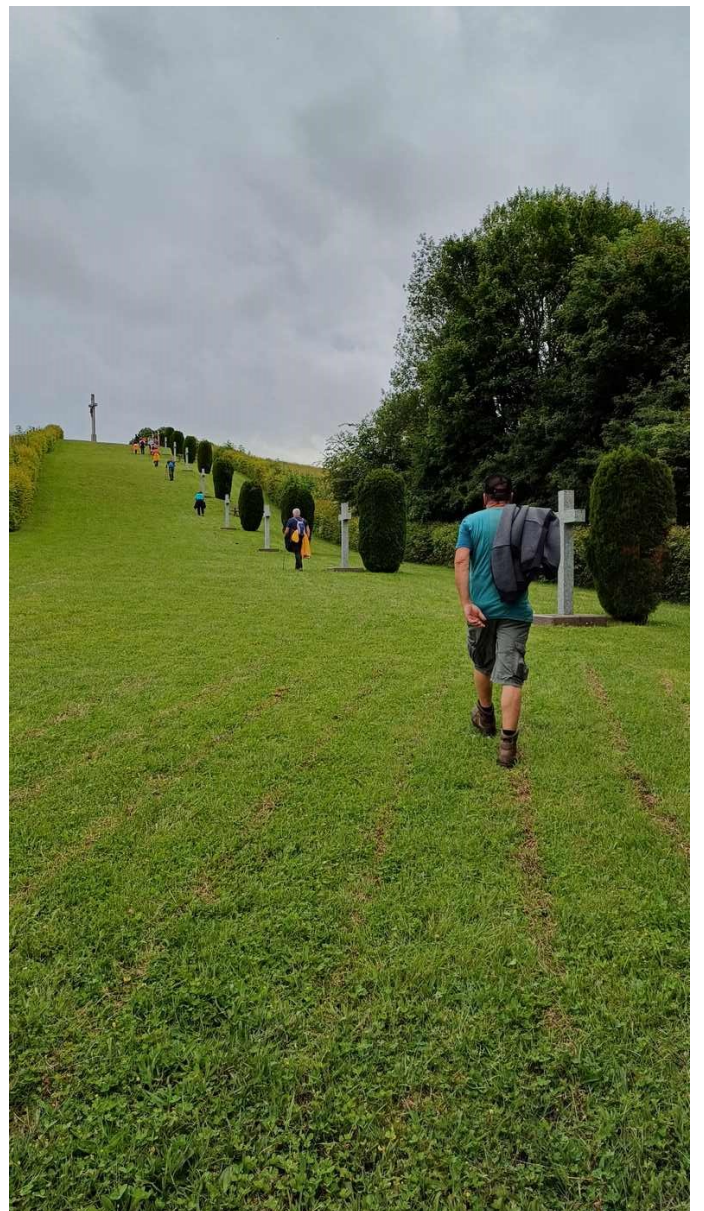


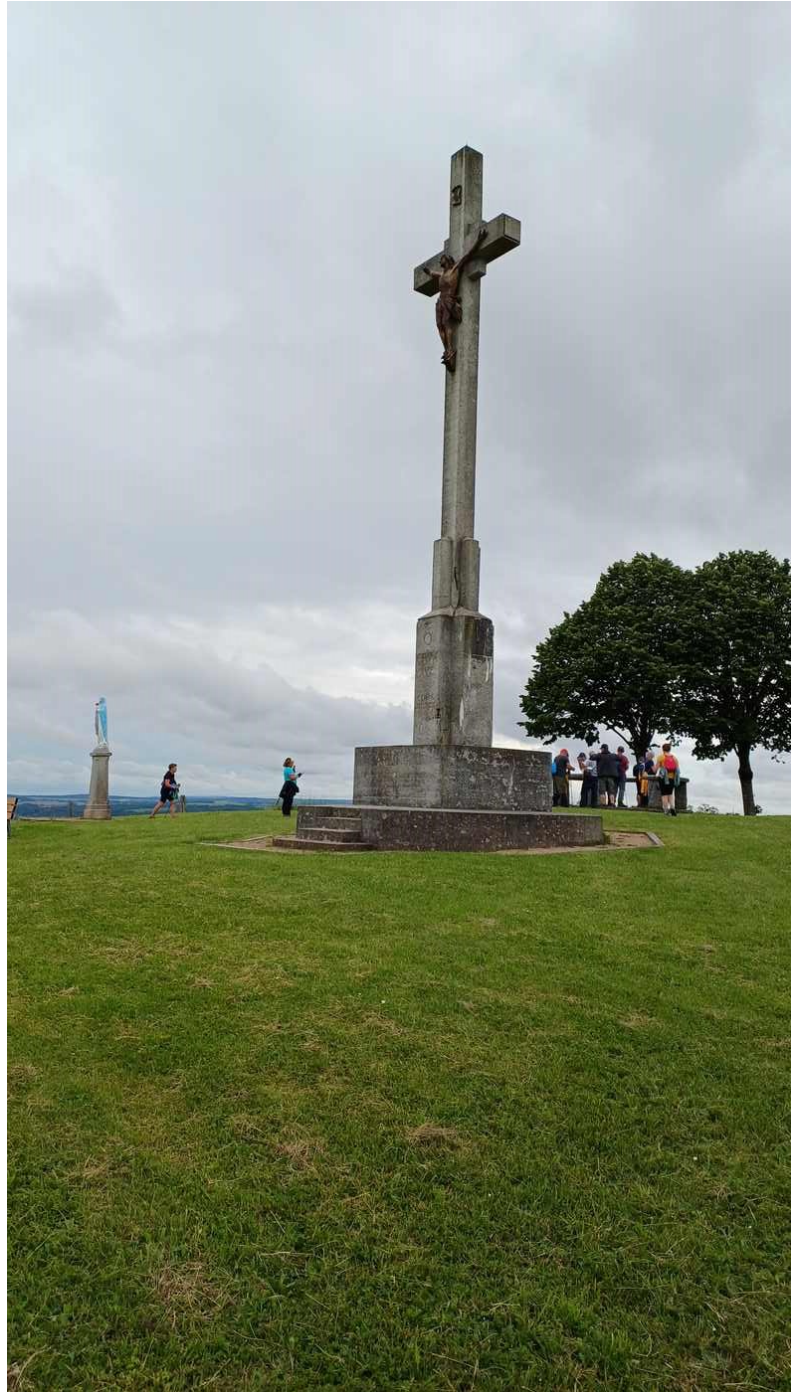


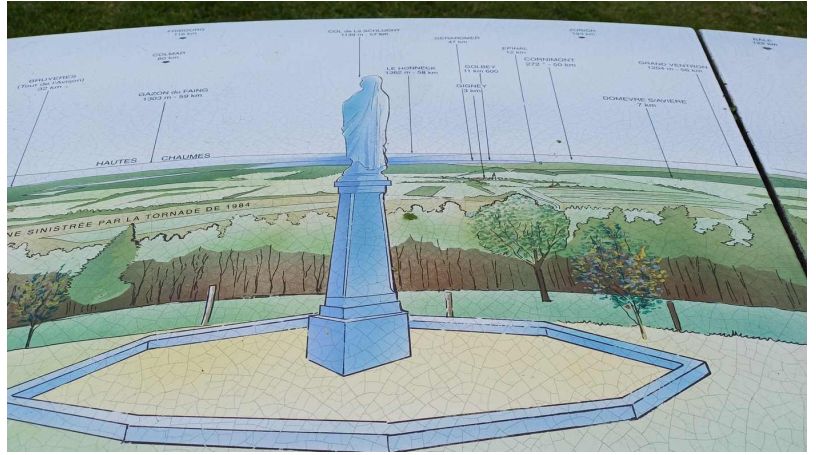
Que ce soit à l'approche de DOMPAIRE en provenance de VITTEL ou MIRECOURT ou au passage sur la quatre voie D166 ou depuis le Chemin Forestier de Lamerey, il y a une colline qui domine le paysage : le belvédère de la Croix de Virine.

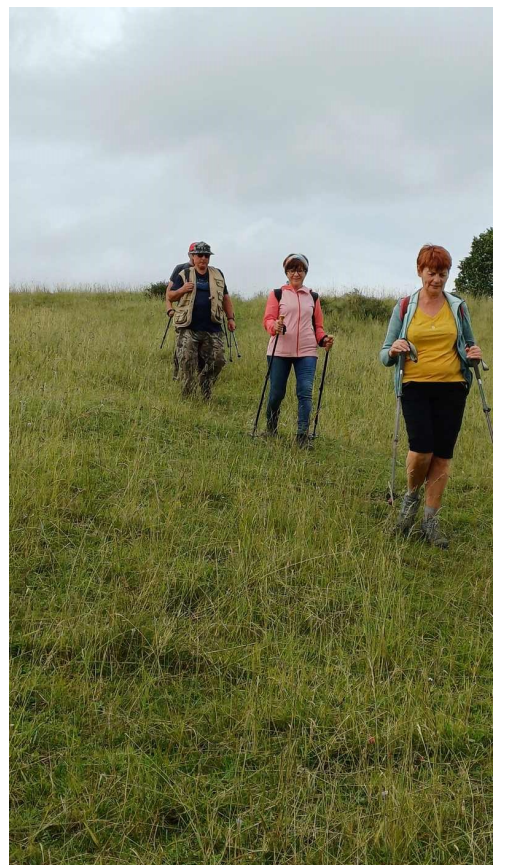
La **Croix de Virine** est située sur le territoire de la commune de CIRCOURT à l'altitude de 465 m, elle fait partie du patrimoine religieux Vosgien.

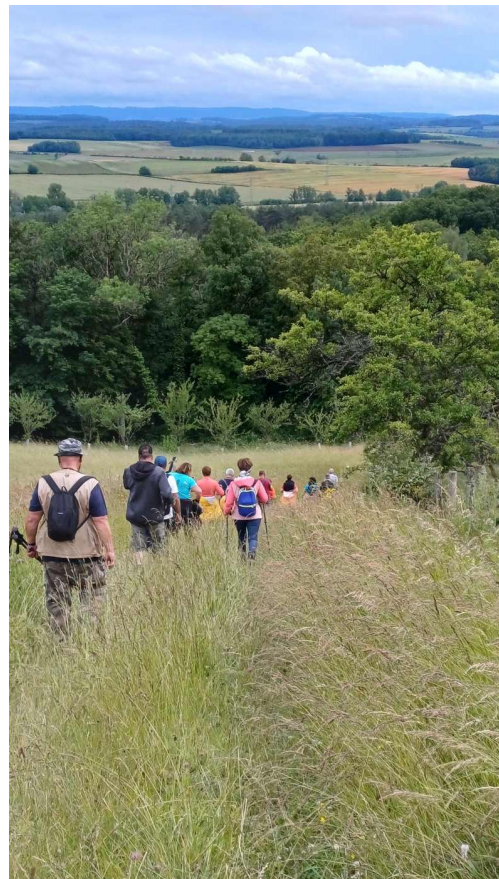
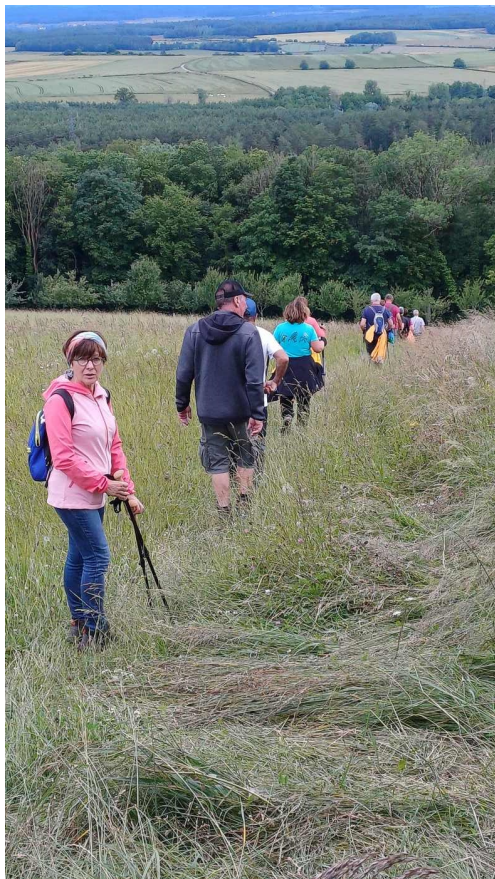
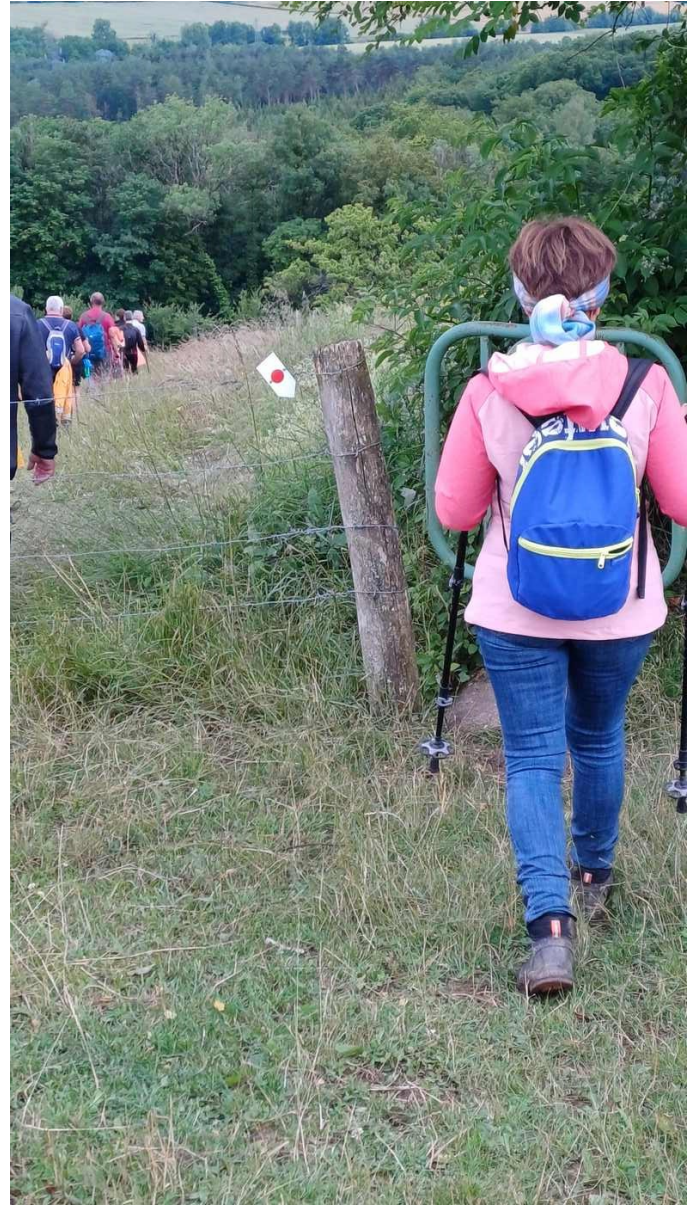
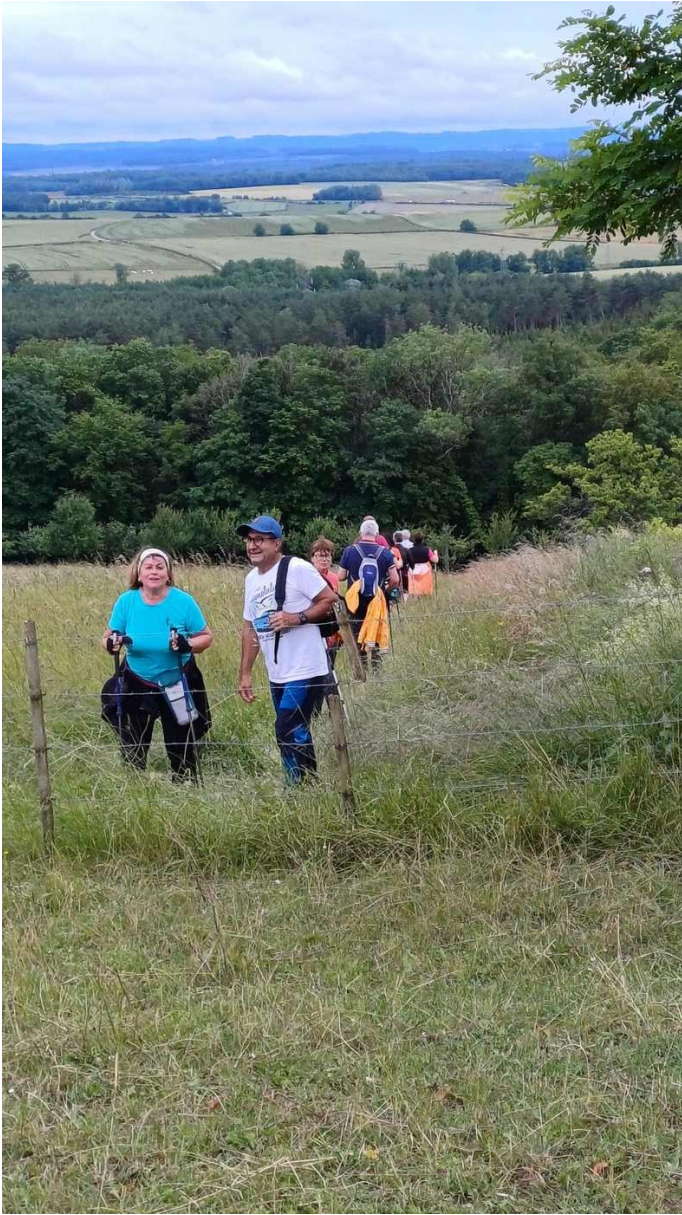




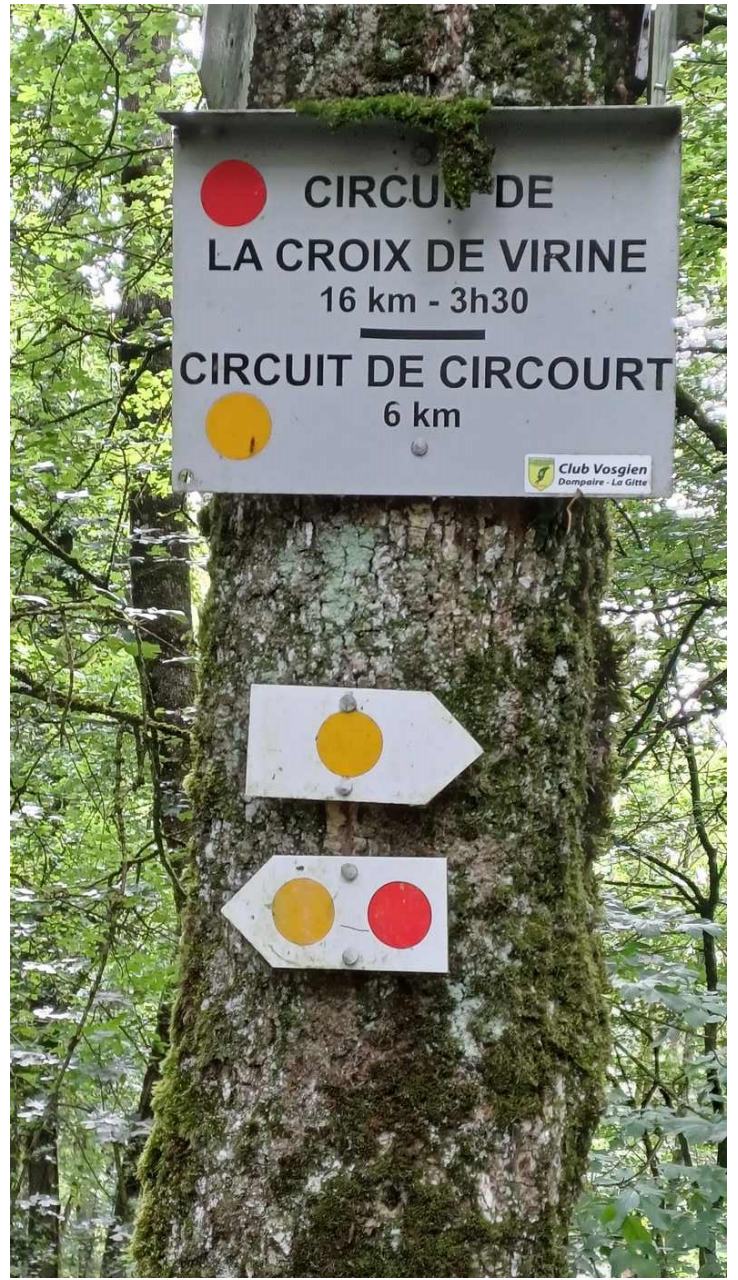


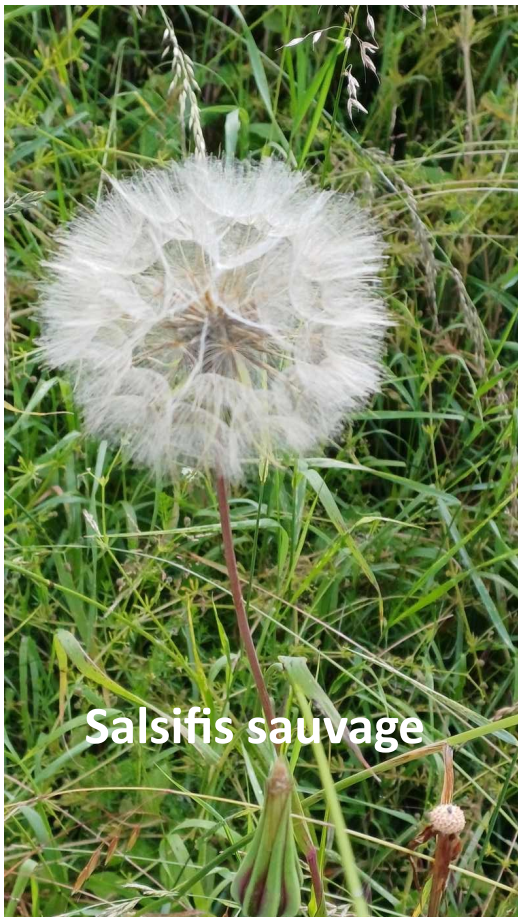












Salsifis sauvage







Fleurs de Tilleul

MERCI PHILIPPE

Pour cette balade